

Bearsted Woodland Trust



Newsletter No. 16

2009



Everyone enjoyed the first snow of 2009.

Winter Woodland

www.bearstedwoodlandtrust.org

Registered Charity 1103585

New Board at Holy Cross Entrance

After a Body Shop party last year, Glynnis Wisbey mentioned that The Body Shop has a charitable foundation for green projects. Peter Willson and Sharon Bayne put together paper work to support our application for funds. Two months later a cheque arrived for £1000. Together with £700 from Cllr Pat Marshall's devolved Parish Council budget, this gave enough money to put up a new information board near the church entrance. BWT would like to thank Glynnis (right) and Pat (left) for their support.



HSBC Lend a Hand

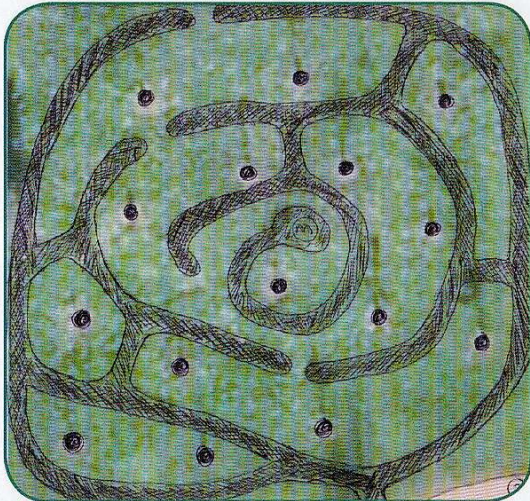
As a part of their ongoing staff initiatives and charity support, HSBC ran a team building exercise on site on March 11th. It involved 20 employees from throughout Kent in constructing a path outside Gore Cottage (below) and through the ancient wood. It is great to see businesses use such activities for staff development and also great for us!



Play Maze

An exciting new play maze for children is being planned in memory of Frank Manning, using donations received in his honour. (see page six)

It is to be a surface path maze, similar to the second maze at Leeds Castle. Two alternative designs are being considered, as you can see below. These would be located in either in the Orchard or opposite the tennis club.



Playzone Update

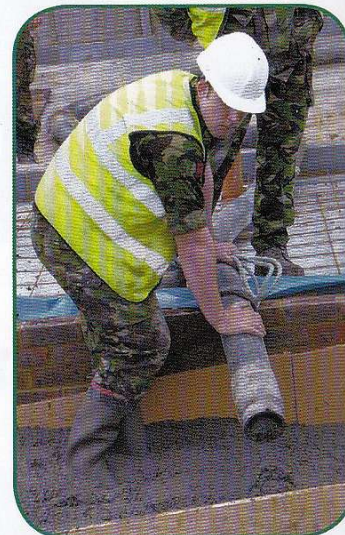
Plans for the proposed Playzone on BWT land, just off Church Landway, are with Bearsted Parish Council. Upon results of their consultation and subject to agreement, details will be put to BWT members for comment.

Community Work Day

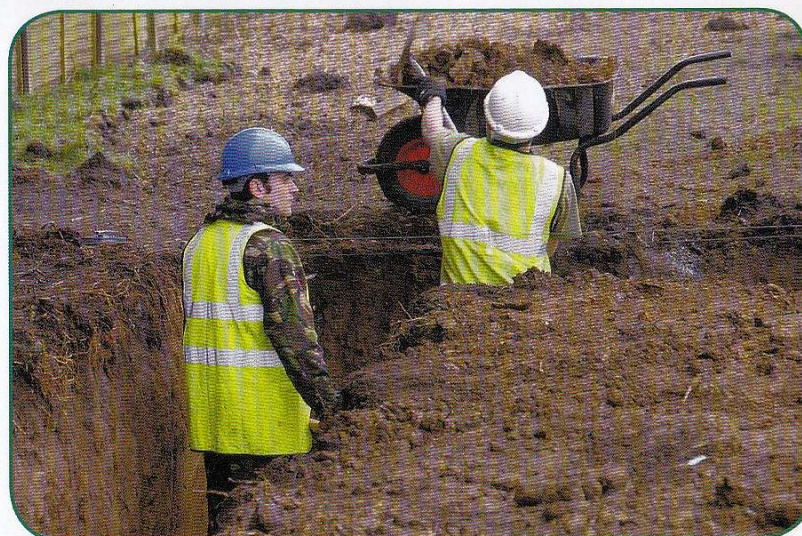
On Saturday 20th June at 9am till noon, we will be running a day for all willing bodies, young and old, to work on the new commemorative maze. There will be fun jobs for everyone as we will be cutting out the maze shape with spades by hand! Later we will be laying sub base and path surface. We need lots of volunteers with spades. Please come, even if you can spend just one hour, it will all be appreciated.

Barn Appeal

Once again we received a superb response to our request for individual donations. Local businesses also contributed, including Landway Surfacing, Canine Beautician, J Dowle Fencing and Garden Services, Bearsted Osteopathic Clinic and The Potted Garden Nursery. We also received major support from Paul Carter's KCC



Member Community Grant; allocations from the devolved budgets of Bearsted's 3 Borough Councillors - Pat Marshall, Richard Ash and Allan Bradshaw; and contributions from Bearsted and Thurnham Parish Councils. Many thanks to everyone who contributed. All this support adds up to c£15000 when tax relief on individual donations is added





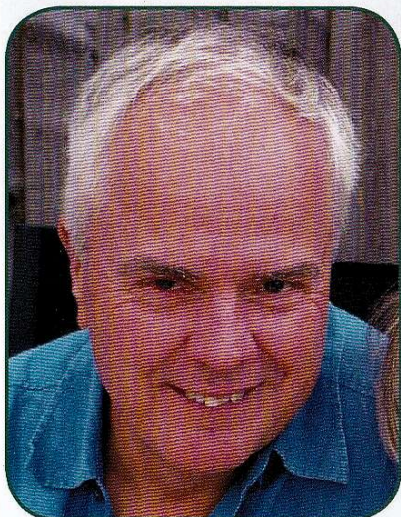
- a very substantial sum. The balance to cover materials will come from Trust reserves. We are very fortunate to have the army's 20 Field Squadron of 36 Engineer Regiment come to our aid in constructing the new barn, following the great job done back in 2007 by the 70 Gurkha Field Support Squadron on the Lilk Stream bridge. The project was expected to take 9 weeks and despite the bad weather the schedule was looking good to complete on time. Much of this is due to the skills of volunteer project manager Dave Johnson who has worked almost full time on the project for almost 6 months.



Photographs of tractor and storage barn construction by Sir Michael Buckley

In Memory of Frank Manning

Frank passed away last November in Maidstone Hospital aged 66. He was a dedicated team member always working in the background seeking no publicity



Frank Manning

for all the work he did in helping to make BWT what it is today. He joined the management team soon after its inauguration in 2004 and held many positions during that period. He was the original membership secretary and more recently was in charge of dedication work for trees and benches and in helping the Trust to secure £78,000 by winning the People's Millions which was on Meridian Television in 2007. A dedicated sportsman Frank was chairman of Mote Squash Club for 12 years as well as a player and coach, a member of Bearsted Bowls Club and Bearsted Golf Club. He will be missed.

A Big Thank You From His Family

Ann, Claire, Emma and their families would like to say a huge thank you for all the donations given to Bearsted Woodland Trust in memory of Frank. Your generosity, kind words and support are such a great comfort to us all. Frank was passionate about the Trust and would be truly overwhelmed by everyone's generosity. His memory will never fade – thanks to you all.

New Delivery Volunteers

As a result of an appeal in the last newsletter, we have 12 new volunteers to join the delivery team. We would like to thank and welcome the following - Graham Bowles, Val Brindley, Margaret Brissenden, Janice Brunning, Mike Bubb, Julie Hossack, Sue Lyons, Elaine Manuell, Marion Voice, Val Williams, and Penny and John Woodgate.

Woodland Flowers

by Sharon Bayne

Spring is the time when woodland flowers appear, as they need to flower before the canopy and shade of the trees becomes too great. Everyone is familiar with bluebells, but there are some other special plants on the Trust's land which only grow in ancient woodland, that you might not be familiar with. Some of them are very tiny though, and will take some hunting out (hint – try searching down near the Lilk bridge).



Moschatel is also known as 'townhall clock' because its small green flowers are arranged at right angles to each other, like a clock tower with a clock face on all four sides, and in this case a fifth on the top. The plants are tiny, only a few centimetres tall (couple of inches in old money).



Opposite-leaved golden saxifrage: A very long name for another very tiny plant! Like moschatel this is another unusual plant with green-ish flowers – actually these are the sepals as the flower doesn't have any petals at all.



Ramsons or wild garlic, is also known as stink bombs, stinking nanny or stinking onions. You have probably guessed by now that it is a bit smelly! Although the leaves are very pungent they are surprisingly mild to eat and can be used in salads. In this part of the country the plant only grows in the dampest areas of ancient woods. Where conditions are right they will spread to cover the ground entirely and little else can grow underneath their broad leaves.

Note to Dog Walkers

Please be aware that there have been complaints from the lake owners regarding dogs that are getting in near the bridge. While volunteers have blocked up the gap, they can't prevent the dogs from swimming.

Owners please take care.

Memberships

Membership renewals are due on the 1st July. You will also be able to renew at the Bearsted & Thurnham Fayre on Saturday 27th June, when we will have our usual stand. This is also a great opportunity to update on development plans and see photographs from recent projects and events. Family membership is a minimum of £5 a year, which can be paid by standing order. Alternatively, why not take out a life membership for a one-off payment of £100. For more details please contact Chris on 739713 or chris@bearstedwoodlandtrust.org

Church Men's Group

Thanks go to the Church Men's Group who, once again, joined our volunteers to plant new trees. This group was set up after the Easter Pilgrimage 2007 to make a difference within the church. Apart from their work on the Woodland Trust, they also regularly help with churchyard maintenance and clearance.

Your Newsletter (Issue 16) has been brought to you by the Editorial Team of Sandy Fleming, Fiona Marriner and Sandra Knatchbull. Design is by Simon Penry. Printing by easyprint www.easyprintuk.com 01622 608240. Please forward your feedback and comments to editor@bearstedwoodlandtrust.org

CONTACT: Peter Willson, Grangeway, 1B Otteridge Road, Bearsted, ME14 4JP Tel: 01622 632682 or peter@bearstedwoodlandtrust.org